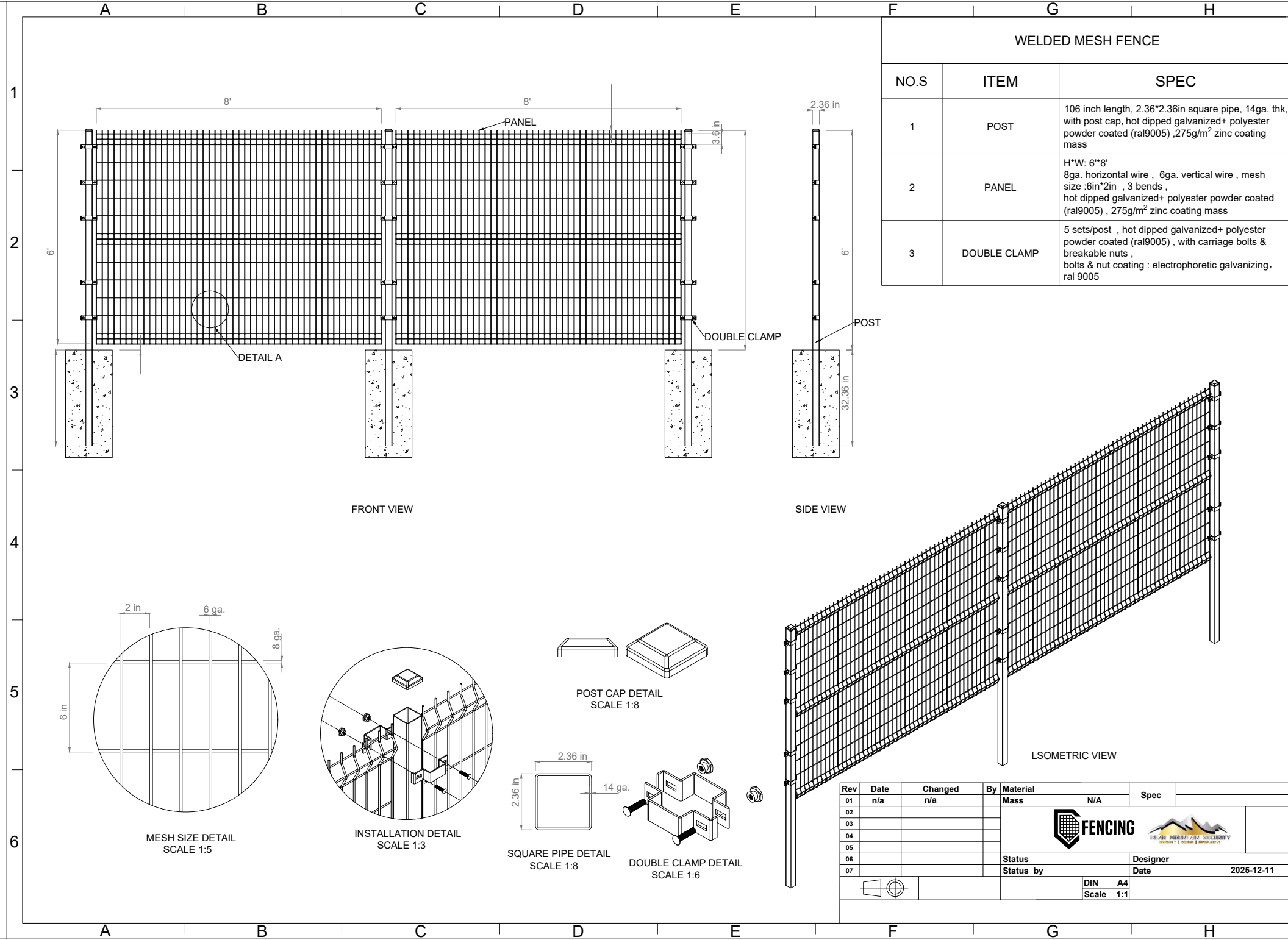


D-FENCE D-MARK FENCE



WELDED MESH FENCE		
NO.S	ITEM	SPEC
1	POST	106 inch length, 2.36*2.36in square pipe, 14ga. thk, with post cap, hot dipped galvanized+ polyester powder coated (ral9005) ,275g/m ² zinc coating mass
2	PANEL	H*W: 6**8' 8ga. horizontal wire , 6ga. vertical wire , mesh size :6in*2in , 3 bends , hot dipped galvanized+ polyester powder coated (ral9005) , 275g/m ² zinc coating mass
3	DOUBLE CLAMP	5 sets/post , hot dipped galvanized+ polyester powder coated (ral9005) , with carriage bolts & breakable nuts , bolts & nut coating : electrophoretic galvanizing. ral 9005

Rev	Date	Changed	By	Material	Spec
01	n/a	n/a		Mass	N/A
02					
03					
04					
05					
06				Status	Designer
07				Status by	Date
				DIN A4	2025-12-11
				Scale 1:1	

